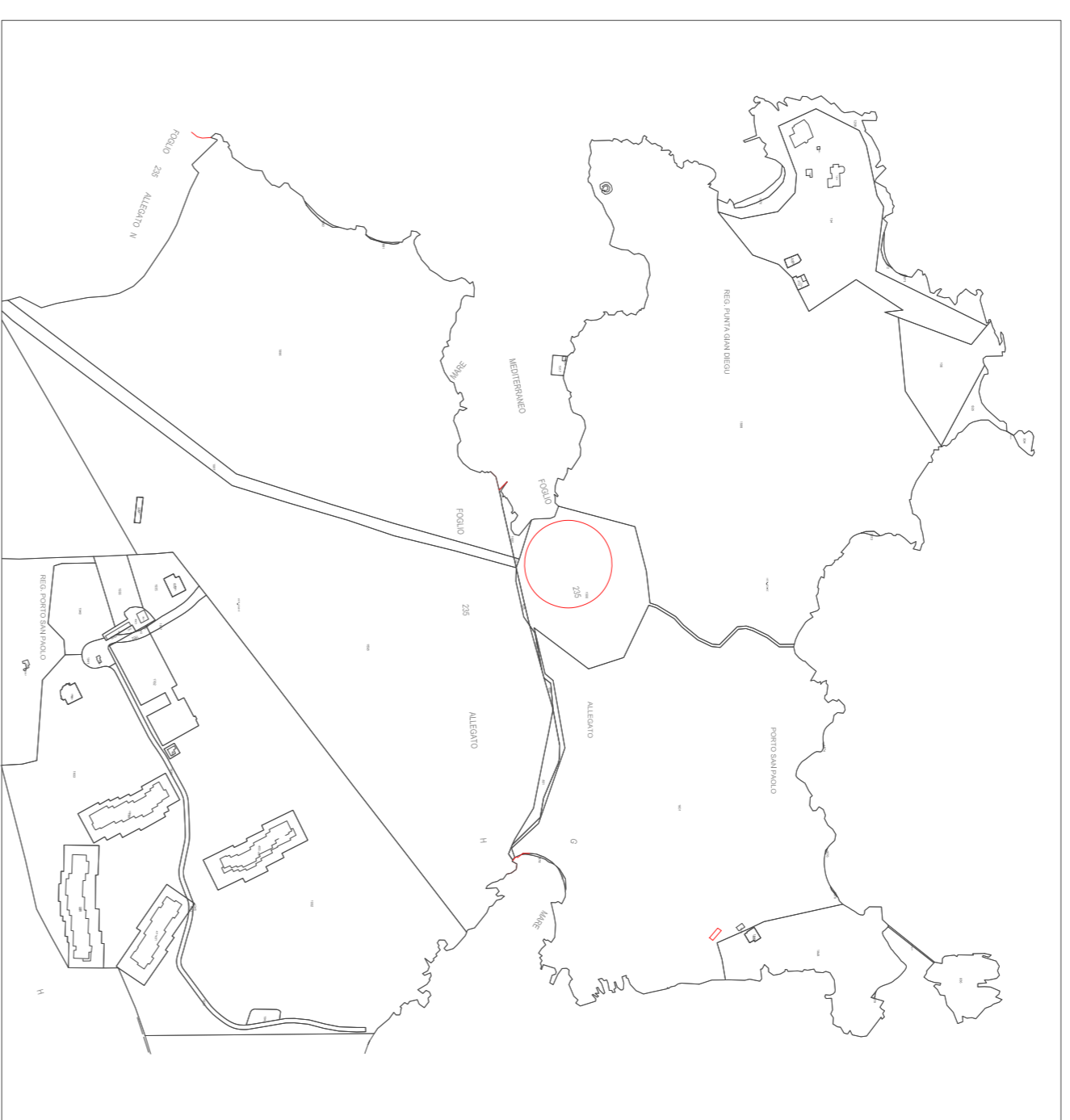


PLANIMETRIA GENERALE DELL'AREA

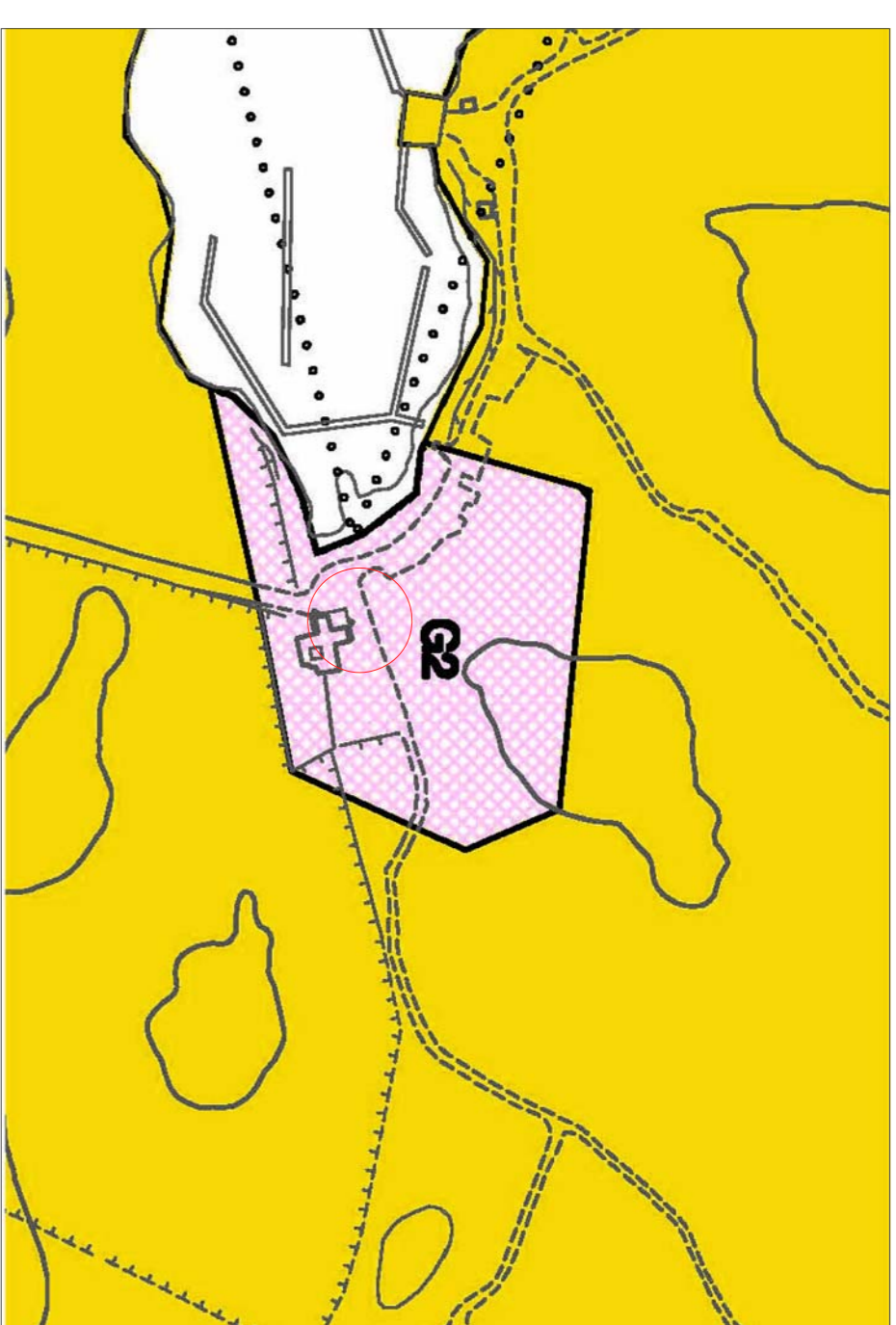
AEROFOTOGRAMMETRIA
SCALA 1:4.000



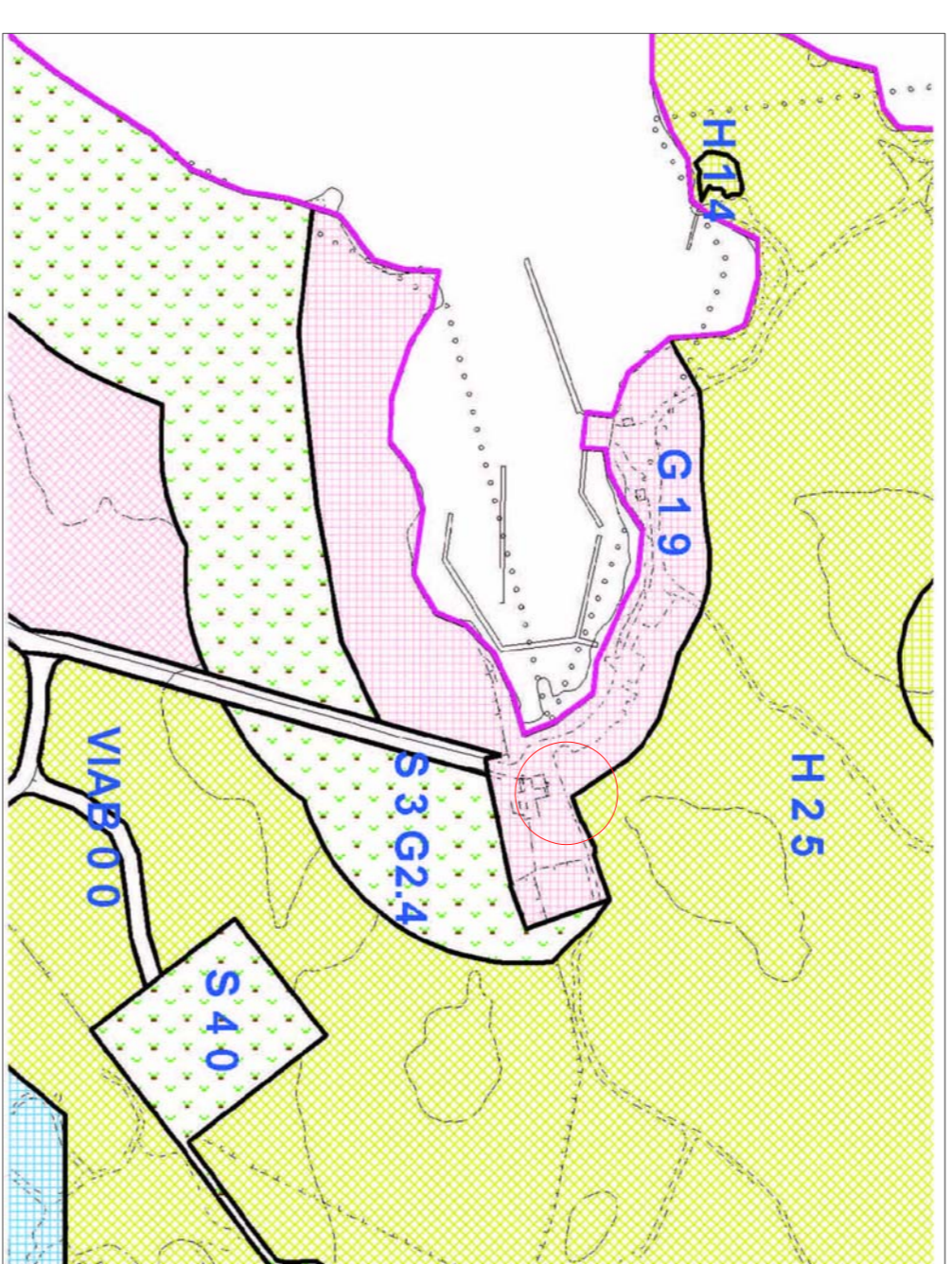
PLANIMETRIA CATASTALE
SCALA 1:4.000



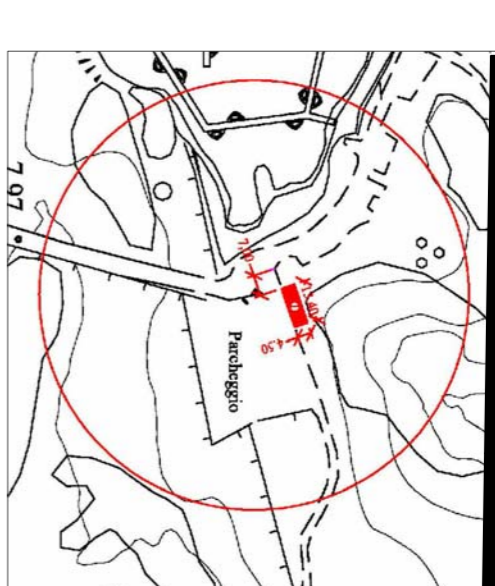
STRALCIO P. di F.



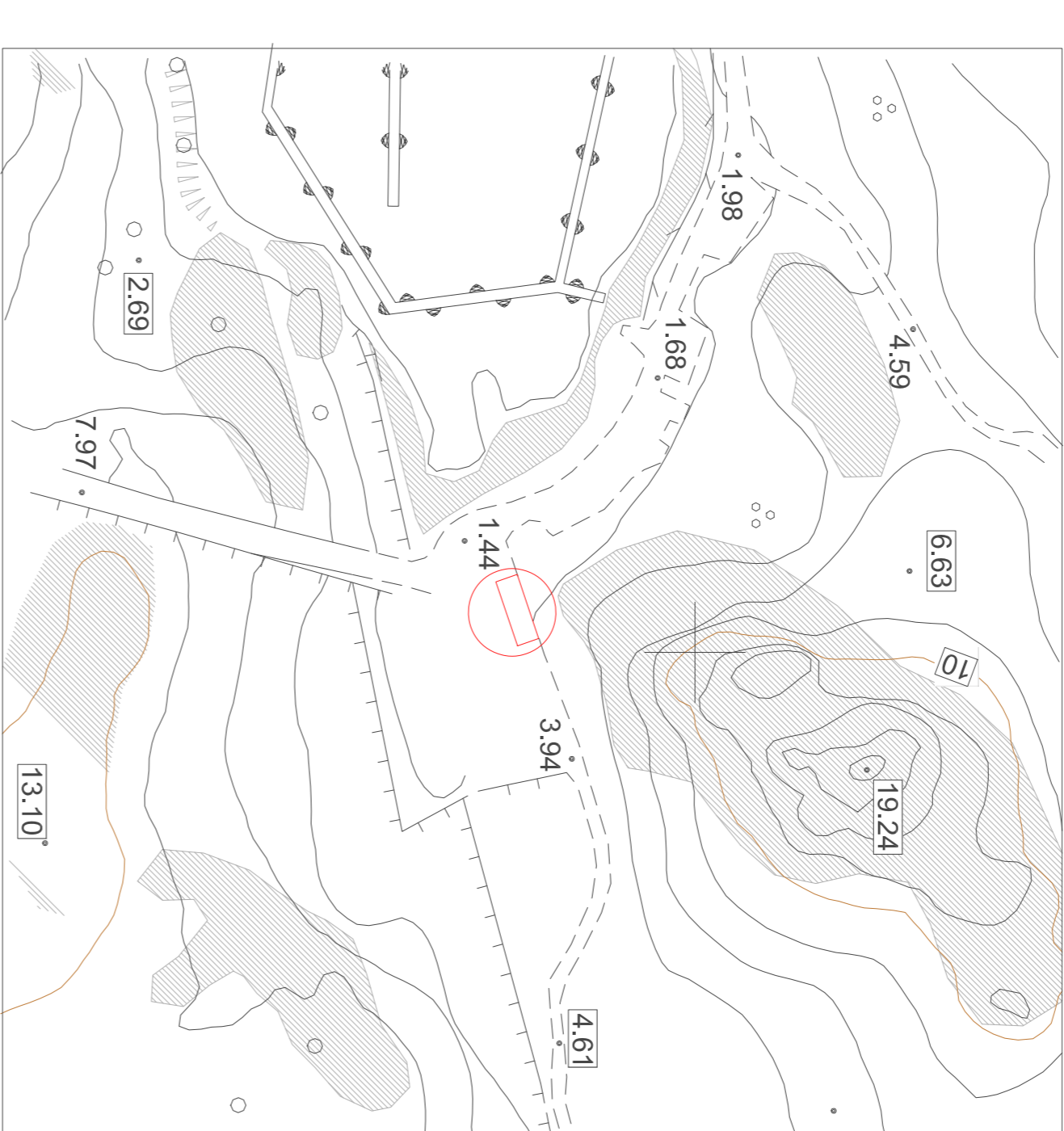
Stralcio P.U.C.



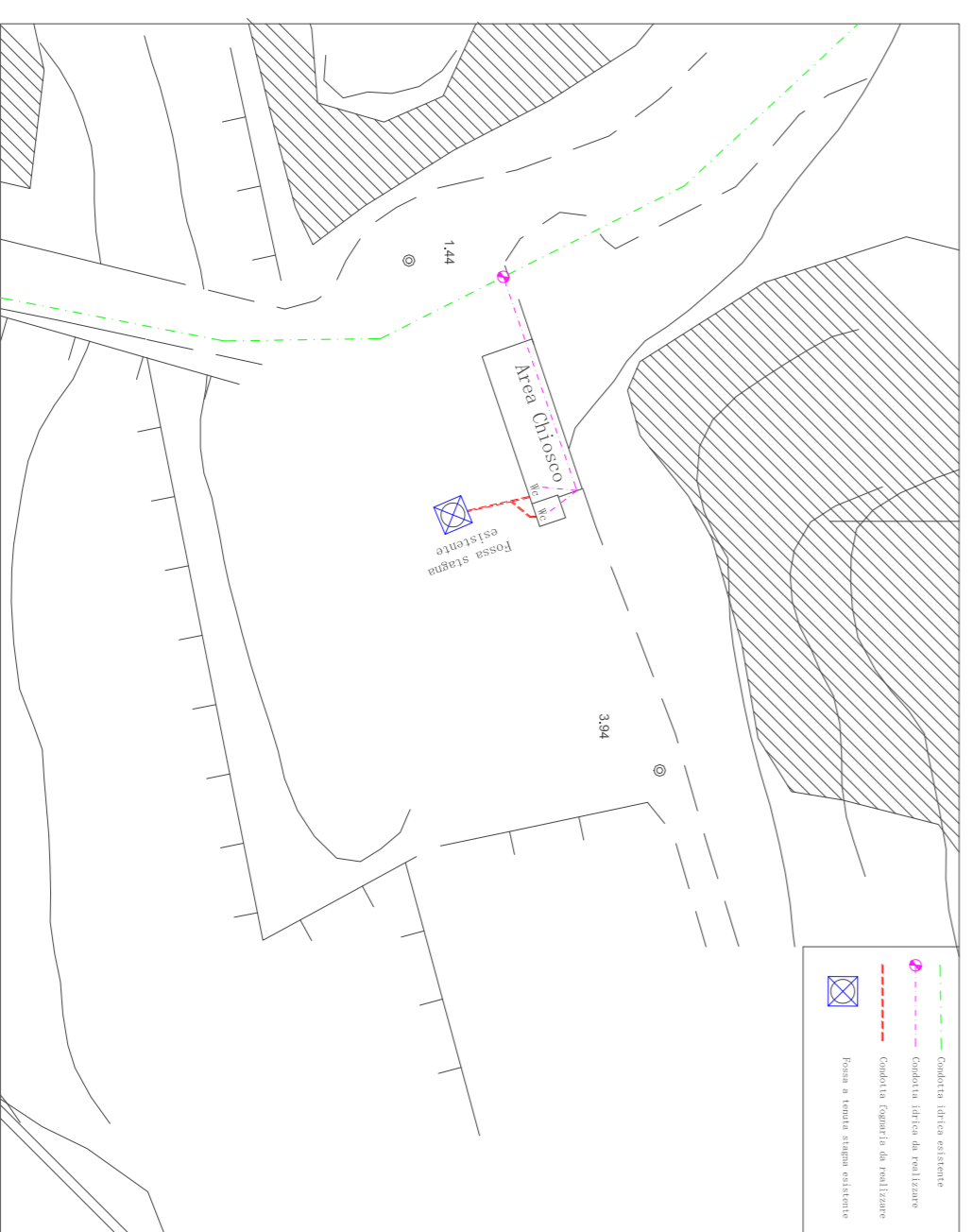
PLANIMETRIA BANDO



AEROFOTOGRAMMETRIA
SCALA 1:1.000



Planimetria area interessata
scala 1:300



Ortofotofoto area interessata
scala 1:300

